



TRUTH:
Travels Revealing Understanding-Trust-Hope
Houston, Texas

MACEDONIA & CROATIA

Hosted by Steve Quill
April 26-May 5, 2010
10 Days



DAY-BY-DAY ITINERARY

MON 26 APR

DEPART U.S.

Depart Houston and connect at Washington Dulles with the overnight transatlantic flight to Vienna via Austrian Airlines. (Meals in-flight)

TUE 27 APR

ARRIVAL SKOPJE

Connect in Vienna this morning with the continuing flight to Skopje, the capital of Macedonia. Upon early afternoon arrival meet your English speaking assistant and transfer to the hotel. In its varied architecture, Skopje attests to a long history of great civilizations and turbulent events. Here one can find sleek modern hotels above cobble-stoned Ottoman streets, stately neoclassical homes right around the corner from grand old Yugoslav-era buildings, chic cafes, shopping malls and brightly colored new offices, as well as the more humble brickwork of Byzantine churches. There will be time to rest and refresh before dinner at the hotel. Holiday Inn (D) <http://www.ichotelsgroup.com/h/d/hi/1/en/hotel/skmp>

WED 28 APR

SKOPJE

Meet today with local people involved in shifting old paradigms of division and nationalism to a new world view of peace and reconciliation among the countries of Southeast Europe. Dinner and overnight at hotel. Holiday Inn (B,D)

THU 29 APR

SKOPJE

Continue with meaningful interfaith dialogues meant to build relationships based upon forgiveness, reconciliation, inclusion and hope. Dinner and overnight at hotel. Holiday Inn (B,D)

FRI 30 APR

SKOPJE/ZAGREB/VUKOVAR

Transfer to the airport for an early morning flight from Skopje to Zagreb, Croatia. A local representative will be waiting to assist the group to the motocoach. Travel cross country to Vukovar on the Danube River in eastern Croatia. This once lovely city particularly suffered while held under siege by the Serbs in 1991. Hotel Lav (B,D) http://www.hotel-lav.hr/english/index_hr.htm

SAT 01 MAY

VUKOVAR

Today meet with young leaders engaged in re-newing Vukovar. Through leadership education these people are using their diversity to create a peaceful future for the region. Hotel Lav (B,D)

SUN 02 MAY

VUKOVAR/FUZINE

After breakfast, drive into the beautiful, mountainous region of Gorski Kotar. Here in Fuzine, prospective young leaders from diverse backgrounds and countries are invited to the peaceful, safe, non-threatening and friendly environment for three week "camps" dedicated to reconciliation and, social and moral change. Dinner and overnight at hotel. Hotel Bitoraj (B,D) http://www.bitoraj.hr/index_en.htm

MON 03 MAY

FUZINE/PUNAT (KRK ISLAND)

This morning drive to the popular resort island of Krk on the Croatian coast of the Adriatic Sea. Drive across the island to Punat where you sail across the waters of Puntarska Cove to the unique island of Kosljun. A 16th century Franciscan monastery is beautifully situated on this island and it displays some exceptional works of art. Island and visit Franciscan monastery. Arrive back to Punat late in the afternoon. Dinner and overnight at hotel. Hotel Omorika (B,D) <http://omorika-punat.com/Page/Stranica.aspx?IDs=21&IDj=2>

TUE 04 MAY

PUNAT/ZAGREB

Enjoy a quiet morning at leisure to stroll on the beach. Return to the mainland and drive to the Croatia's capital city, Zagreb. A panoramic overview tour will introduce you to the gracious 19th century city center. This evening enjoy a farewell dinner and performance in local restaurant. Four Points Panorama (B,D) <http://www.hotel-fourpointspanorama.com/hotel-fourpoints-panorama-zagreb>

WED 05 MAY

RETURN TO U.S.

After breakfast transfer to Zagreb airport for flight check-in. Connect in Vienna with your homeward bound flights. Arrive home this same day enriched with your cross-cultural connections in the name of peace. (B, Meals in-flight)

Code: **B**reakfast, **L**unch, **D**inner
Itinerary subject to change.



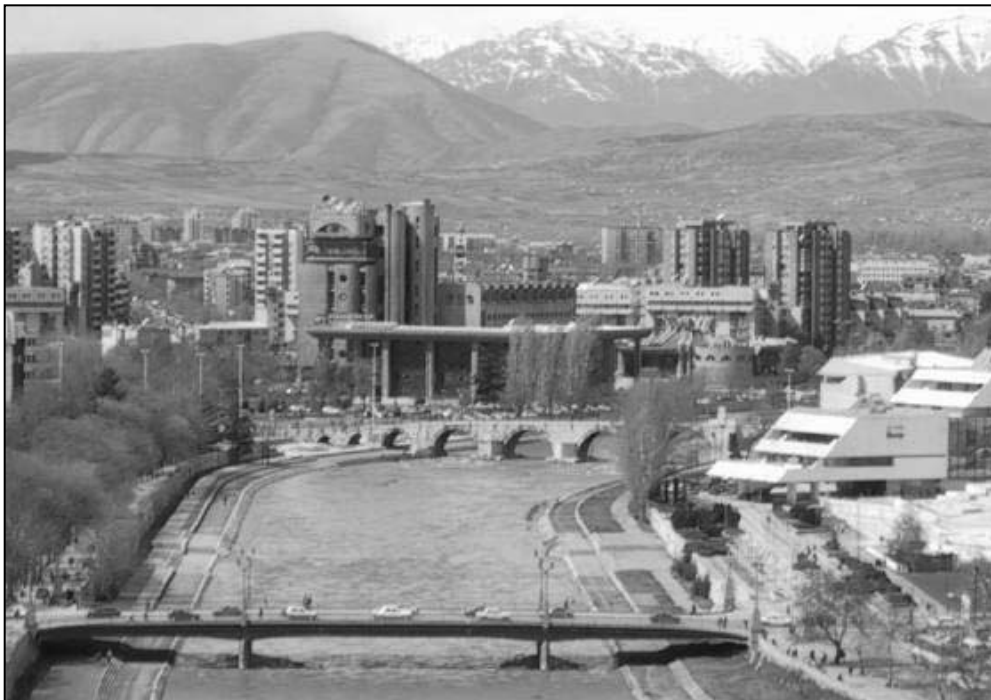
TOUR CONDITIONS

PAYMENT SCHEDULE: Your reservation and deposit of \$400 per person are requested immediately to fulfill the group deadline requirements. Note that space is limited and reservations are taken on a first come, first served basis. A second payment of \$1000 is due December 22, 2009. Final payment is due February 20, 2010. For credit card payment Group Travel Directors accepts Visa, MasterCard, Discover or American Express.

REFUND POLICY: All cancellations must be in writing. There is no refund for partial or unused land arrangements. Note: Airline tickets will be issued well in advance prior to departure and may be nonrefundable. The following penalties will apply: Up to December 21, 2009- \$100 per person administrative fee plus any unrecoverable deposits; December 22, 2009 – April 18, 2010- Deposit plus any unrecoverable payments to hotels, tour operators or airlines; April 19, 2010 – No refund.

CHANGES TO GROUP FLIGHTS: The group airfare contract for this tour may not allow travelers to make any date or itinerary changes. If you are considering other dates or cities, please submit your request in writing well in advance to secure the best rates and schedule, but no later than December 22, 2009. A minimum fee of \$175 per person will apply for changes to group flights in addition to a possible airfare increase.

LATE BOOKINGS: Passengers registering within thirty days of tour departure will be charged a \$50 per person fee. Tour payment in full is required before we can request and confirm space. This fee does not cover any additional airline or ground service charges.



CONDITIONS AND RESPONSIBILITY

Group Travel Directors (GTD) provides customized travel planning throughout the world for group travelers who have a variety of reasons and goals for travel. The goals and/or opinions of these groups do not reflect or imply the position of GTD in any matter. Brochure contents may not be duplicated without permission from GTD. In offering these travel arrangements, Group Travel Directors, Inc. (GTD) acts solely as an agent for the sale of air transportation and other travel related services. GTD maintains no control over the personnel, equipment or operations of any entity furnishing services, products or accommodations. GTD assumes no responsibility or liability for, and shall not be expected, asked or required to pay for any injury, damage, expense, personal injury, property damage, inconvenience or any other loss experienced by reason of: (1) any intentional, wrongful, negligent or unauthorized act or omission on the part of any supplier, its agents or employees; (2) any defect, breakdown or other failure of any vehicle, equipment, service, product or other instrumentality which is owned, operated or otherwise used by a supplier; (3) any intentional, wrongful, negligent, or unauthorized act or omission on the part of any other party not under the direct control of GTD; (4) financial problems causing nonperformance by any supplier; or (5) any other cause, condition or event whatsoever beyond the direct control of GTD. GTD cannot guarantee any rates, bookings or reservations of any supplier. Your retention of tickets, reservations or bookings after issuance shall constitute a consent to the foregoing provisions. All prices quoted are subject to change if airlines or ground operators increase their prices, the U.S. dollar is devalued significantly against foreign currencies, the group falls below minimum numbers, or a fuel surcharge, government tax or user's fee is imposed. Baggage and personal effects are the sole responsibility of the owners at all times. GTD reserves the right to withdraw from any tour any tour member whose conduct is incompatible with the interests of the group as a whole. The above Conditions and Responsibility also covers the group leader(s) and their respective organizations.

NOTE TO OUR TRAVELERS:

Please be assured that GTD continually monitors industry events, such as airline strikes and bankruptcies, etc. If any such events affect your tour, you will be notified. At the time this tour was developed there was not a U.S. State Department Travel Warning in effect for this destination; please refer to the following website for current information or call Group Travel Directors. http://travel.state.gov/travel/cis_pa_tw/tw/tw_1764.html

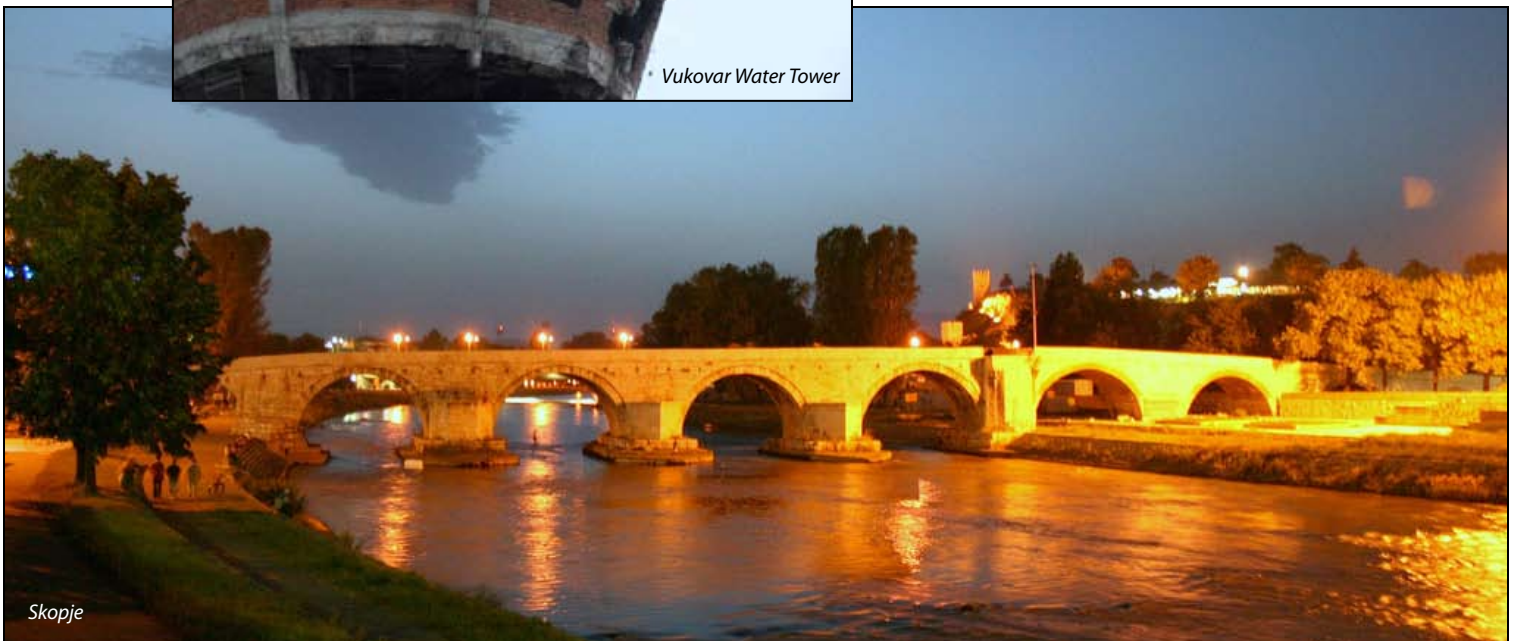
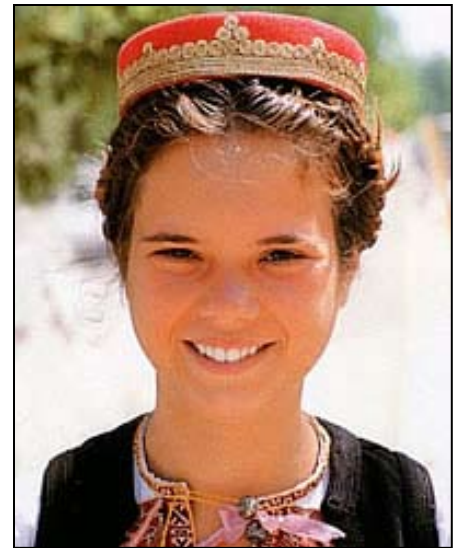
For more information, contact:

Steve Quill
TRUTH

(Travels Revealing Understanding-Trust-Hope)
2707 East Pebble Beach
Missouri City TX 77459
Tel: 713-249-8470
email: sdquill@comcast.net

or

Group Travel Directors
2000 West 98th Street
Minneapolis, MN 55431-2593
tel: 952-881-7811 or 800-747-2255
fax: 952-881-6276
email: groups@gtd.org
www.gtd.org



GTD TRAVEL INSURANCE

Travel insurance is included as an option with the initial tour deposit and is highly recommended. GTD offers a competitive policy from an independent company. By purchasing insurance at the time the tour deposit is made, you can be covered for events that may cause you to cancel or interrupt your trip, i.e., pre-existing medical conditions (certain restrictions apply). If you decline travel insurance at the time of reservation, you may purchase it within 14 days with the pre-existing conditions waiver or you may purchase it later without the pre-existing conditions waiver. You may contact Travel Insured International for further information before making your decision: 800-243-3174.

GTD TRAVEL INSURANCE INCLUSIONS

- Trip Cancellation.....up to Tour Cost*
 - Trip Interruption.....up to 150% of Tour Cost**
 - Travel Delay.....\$750
 - Missed Connection.....\$300
 - Baggage.....\$1,000
 - Baggage Delay.....\$200
 - Medical Expense.....\$50,000
 - Evacuation/Repatriation.....\$500,000
 - Accidental Death.....\$10,000
 - Assistance Service.....included
- * a maximum of \$4500 per person*
*** a maximum of \$6750 per person*

Cost of this optional GTD Travel Insurance is **\$195** per person. Additional coverage provided as needed; the full cost of your tour must be covered.

WHAT'S INCLUDED?

- AIRFARE:** Round-trip economy class airfare from Houston via United, Austrian and Croatia Airlines or other ARC/IATA approved scheduled carrier.
- ACCOMMODATION:** Eight nights accommodation in superior tourist and first class hotels, double occupancy, with private facilities. Hotels as listed or similar.
- MEALS:** Breakfast and dinner daily as outlined in the itinerary.
- GROUND TRANSPORT:** Transfers and transportation by deluxe motorcoach.
- ENTRANCE FEES:** Roundtrip boat to Kosljun Island and entrance to the Franciscan Monastery
- PORTERAGE:** Luggage handling of one piece per person at hotels.
- LOCAL HOST/EXPERT GUIDES:** TRUTH-appointed local host from arrival in Skopje to departure from Zagreb. Experienced English-speaking assistants for flight arrivals and departures.
- GRATUITIES:** Gratuities to drivers and guides (for your convenience, \$72 per person has been included).
- TAXES:** Airport/foreign departure taxes (currently \$411 per person).
- ALL THE INFO YOU NEED:** Comprehensive documentation including travel accessory, bag tags, name tags, flight and land itineraries, destination literature, customs information, travel tips and more.

COST SUMMARY

\$4350

Group Flights From Houston
 Tour Gratuities (\$72)..... Included
 Airport Taxes (\$411)..... Included
 *Costs per person based on double occupancy in USD

Optional Individual Supplement

Single Room*.....\$470
 *In addition to base tour cost
 Very limited availability on request basis.
 GTD can assist in finding roommates;
 however, this cannot be guaranteed

Costs: The tour cost is per person based on current airfare from Houston (other cities available), double occupancy, tariffs and currency valuations as of October 2009, a minimum of 20 travelers, and subject to confirmation. While we will do everything possible to maintain the listed price and/or itinerary, they are subject to change due to circumstances beyond our control. Single room supplements may have limited availability and are on a request basis only.

Items Not Included

- Fuel surcharges and/or tax increases levied since the pricing of this tour.
- Beverages other than coffee/tea at breakfast.
- Any meal or sightseeing item not listed in the itinerary.
- Items of a personal nature.
- Optional insurance for health, baggage, and trip cancellation/interruption is not included and highly recommended. Please refer to the Travel Insurance section.
- Passport fees. A passport valid six months beyond date of reentry to the U.S. is required.
- No visa is required for U.S. citizens; non-U.S. citizens may require a visa.

PRE-EXISTING medical conditions and other circumstances are covered when insurance is purchased at the time of reservation / deposit. Contact Travel Insured for more info. 800-243-3174

RESERVATION APPLICATION • APPLY ONLINE AT: WWW.GTD.ORG G#100408 • OR CLIP AND MAIL

TRUTH Macedonia & Croatia • April 26-May 5, 2010 • G#100408 • Group Travel Directors • 2000 W. 98th Street, Minneapolis, MN 55431

Mr. Mrs. Ms. _____
(Name as it appears on passport) FIRST MIDDLE LAST

Address (no P.O. boxes please) _____

City _____ State/Province _____ Zip/Postal Code _____

Phone/Day () _____ Phone/Evening () _____ E-Mail _____

Roommate _____ I will pay the supplement for a single room.

Advise if we can assign you a roommate or single supplement. GTD can assist in finding roommates; however, this cannot be guaranteed and the supplement may apply.

FLIGHT ARRANGEMENTS (please check one)

- I/We will take the group flights from Houston.
- I/We will need assistance with flight arrangements from _____ airport to join the group.
- I/We will make all of my own flight arrangements.
Please contact GTD for land- only rates.

DEPOSIT/TRAVEL INSURANCE (please check one)

Please reserve _____ space(s) for me/us; we choose the following deposit option:

\$ _____ **\$595** per person **inclusive of travel insurance.**
 \$ _____ **\$400** per person **without travel insurance.**
 I/We decline now, but understand it can be purchased later without the pre- existing waiver.

Form of Payment

Check
 Charge my deposit(s) to
 Credit Card # _____
 Exp _____
 Security Code _____
 Name as it appears on credit card: _____

Please make checks payable to Group Travel Directors G#100408

I/We have read and understand the conditions of this brochure. Parent or guardian signature is required for travelers under age 18.

Signature _____ Date _____

Signature _____ Date _____



100408/90 C/1/RP